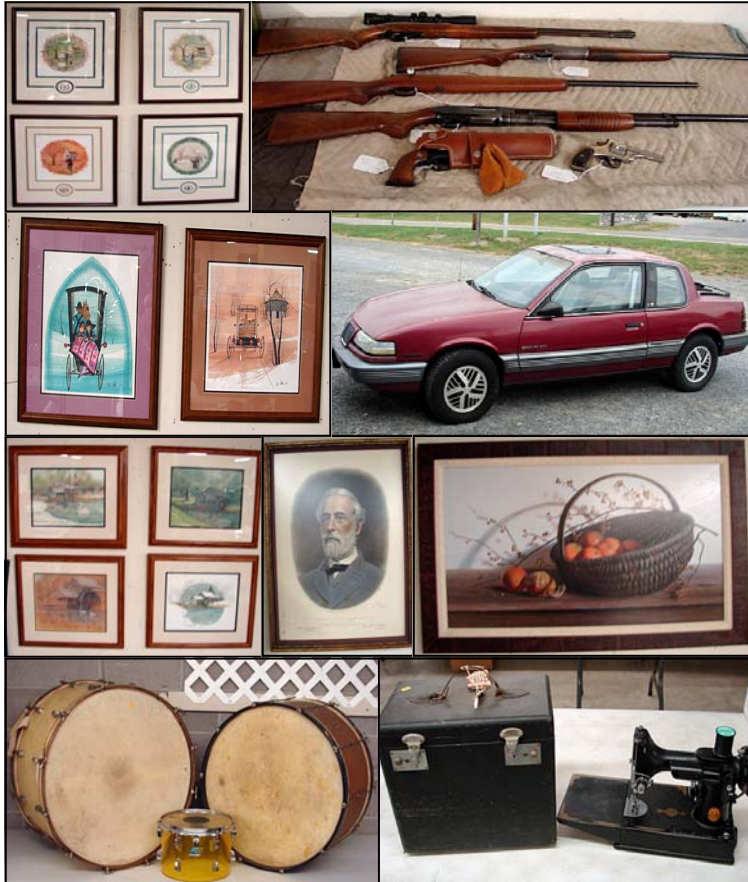


# Multi Estate Auction

Friday, October 22, 2010 3 pm  
Just 45 Min. South of Roanoke!



**Guns:** Winchester Model 67A 22 rifle, Savage Model 24 .22 LR over .410 shotgun, Glennfield Model 60 .22 rifle w/Tasco scope, Winchester Model 12 16 ga shotgun, Harrington & Richardson .32 double action revolver, Ruger New Model single six .22 revolver with both cylinders, assorted ammo. **Partial Listing Includes:** 1989 Pontiac Grand AM, Victorian marble top walnut dresser, wrought iron dinette set, oak pedestal table w/chairs, large antique safe, inlaid D end table, mahogany china cabinet & sideboard, several nice sofas & settees, recliners, folding screen, side tables, country chairs, new La-Z-Boy, three bedroom suites, mantle, hanging shelf, dining tables with chairs, Persian rugs, assorted crocks, jugs, churns, ten P. Buckley Moss pictures, diminutive local basket, nice collection of case knives, misc art, prints, mirrors, set of Noritake china, Singer Feather Lite sewing machine, mixing bowls, Stangle pottery, coffee grinder, silverplate, figurines, cup & saucer collection, large collection of tobacco cards, arrowheads, cigar mold, political pins, tole tray, vintage drums, stemware, dresser sets, epergne, assorted coins, costume jewelry, reference books, flatware, lamps, cap guns, and More! **Rough Room:** Statesman riding mower, washer & dryer, dish washer, range, small Fisher wood stove, trolling motor, gas grill, chainsaw, leaf blower, step ladders, tv, furniture, weed eater, small appliances, box lots, glass, books, decorations, kitchen items, cross cut saw, garden tools and more!



**VALLEY AUCTIONS, LLC**  
"Virginia's Fastest Growing Auction Firm!"  
5351 Wilderness Road, Dublin, VA 24084  
Office: (540) 674-4771  
VA Firm # 726

**DIRECTIONS:** From I-81 take exit 98, go south on Rt. 00 .5 mi. turn at first left onto Hance Road. Go .1 mi. & take a left onto Wilderness Road. Go .7 mi. to Auction Gallery on left.  
**TERMS:** Cash, approved check and all major credit cards. A 10% Buyers Premium will be added to all sales. A 3% charge will be added to credit card purchases.  
**PREVIEW:** 11am. Sale starts at 3 pm in Rough Room with box lots. Main Gallery starts at 5 pm.